



Inland hatchery at Morgex.



Aquaculture facility of the Regione Valle d'Aosta,
Morgex, AO, Italy



The site

The village Morgex (AO) is located on the Italian Alps at ca. 900 m, in the natural reserve of Marais, a wetland on the right side of the Dora Baltea river. The Marais hosts a wide number of migrating aquatic birds, during their reproductive periods. The autochthonous ichthyofauna is mainly represented by rheophilous species of high and mean altitude.



The hatchery: site and facilities.



Foto: Pietro Ceccuzzi



Foto: Pietro Ceccuzzi

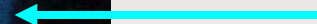
Views of the Monte Bianco massif, around Morgex (top) and of the hatchery, with on-growing units and cages (left). Reared fish is used to repopulate endangered natural habitats.

Selection of reproductive adults

Selection procedures



Best adult individuals
have been selected.



Assisted spawning

Foto: Pietro Ceccuzzi



Assisted spawning (on the left) and fertilization (on the right) of trout's eggs. Adult reproductive individuals are usually large sized.

In Morgex's hatchery Salmonidae are reared, and namely: *Salmo trutta fario*, *S. trutta marmorata*, *Salvelinus alpinus* and *Thymallus thymallus*).



Foto: Pietro Ceccuzzi



Fertilized eggs selection

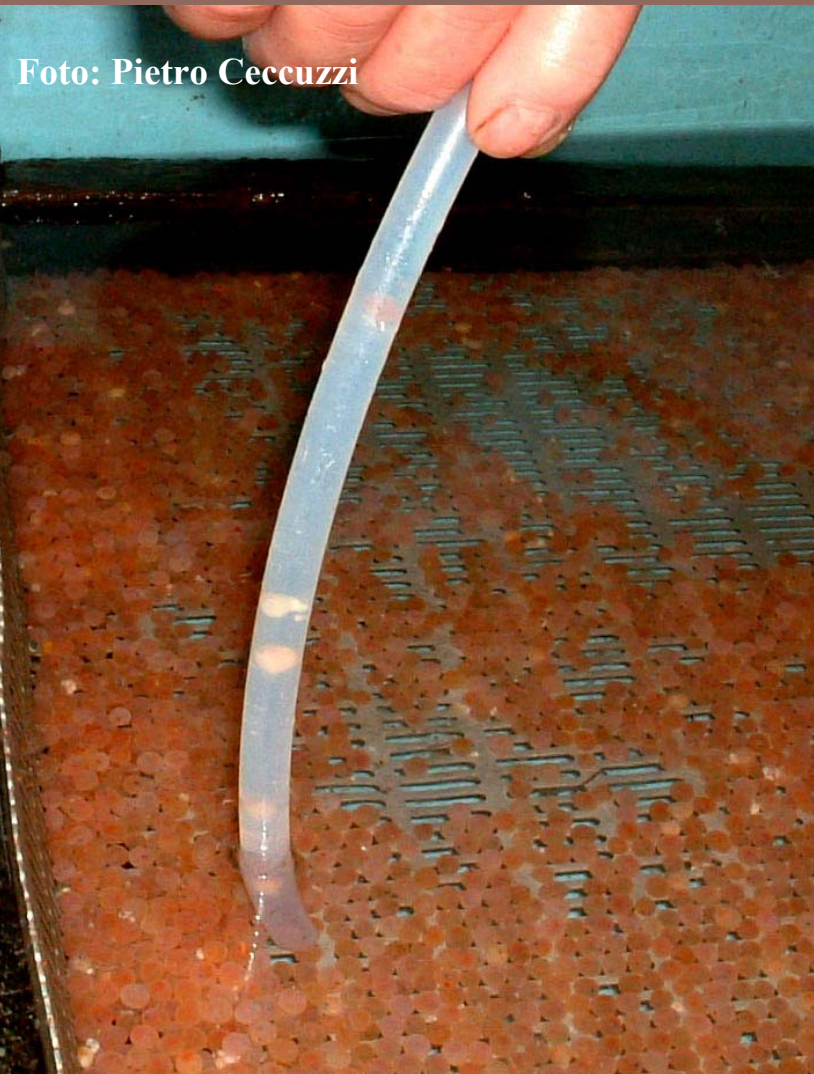


Foto: Pietro Ceccuzzi

Non-fertilized, non-vital eggs are white, not reddish and “eyed” as fertilized eggs. They can be harmful in hatching tanks, reducing the hygiene levels. An expert team is required to manually select them. They are white, not reddish and “eyed” as fertilized eggs.



Foto: Pietro Ceccuzzi

Selection in hatching tanks



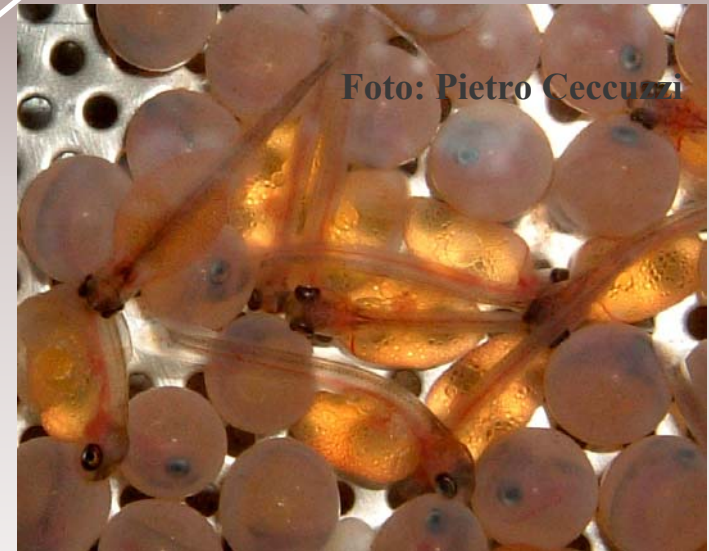
Cultivating Embryos



Incubation jars for
eggs

Larvae and fry

Larval stage lasts until the yolk sac (arrows) is still present.



Eyed eggs and larvae at an early developmental stage.



Salmo trutta fario: giant reproductive adults



female



male



Foto: Pietro Ceccuzzi

Foto: Pietro Ceccuzzi

Visitors group



Foto: Pietro Ceccuzzi