

# Inland hatchery in Valgermanasca

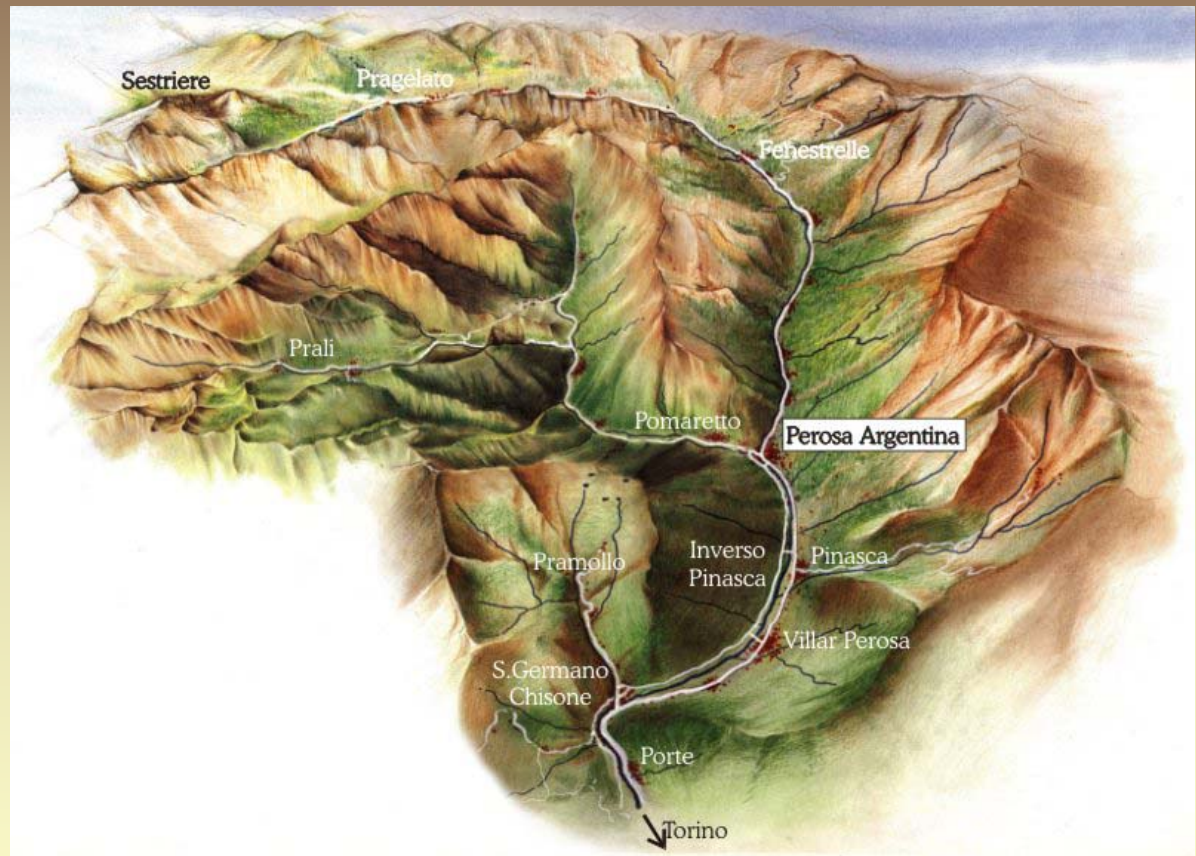


Valgermanasca, TO, Italy

Coordinator: [prof. G.Forneris](#), [University of Torino](#).

# Geographic informations

The Val Germanasca is an Italian alpine valley located in the chain of Alpi Cozie, near the confluence of two streams, called Germanasca and Chisone. Max. elevations of the surroundings mountains: up to 1500 m.



# The site

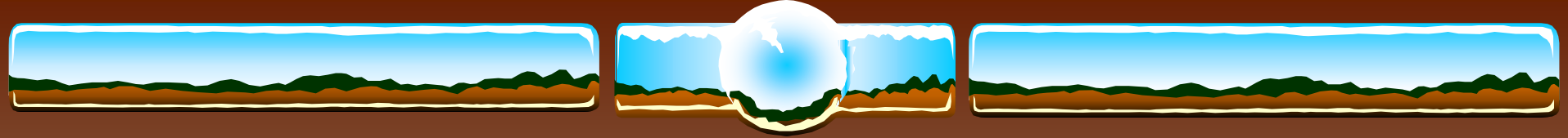


The site is typically Alpine, with abundant snow fall during the winter time, rapid-flow streams and Alpine lakes.



Two ichthyic species are reared in This hatchery, and namely *S. trutta* Fario and *S. marmoratus*. This last is endemic in the basin tributary of the Po river.

Foto P.Ceccuzzi



# The hatchery: from eggs to fry

**Fry**

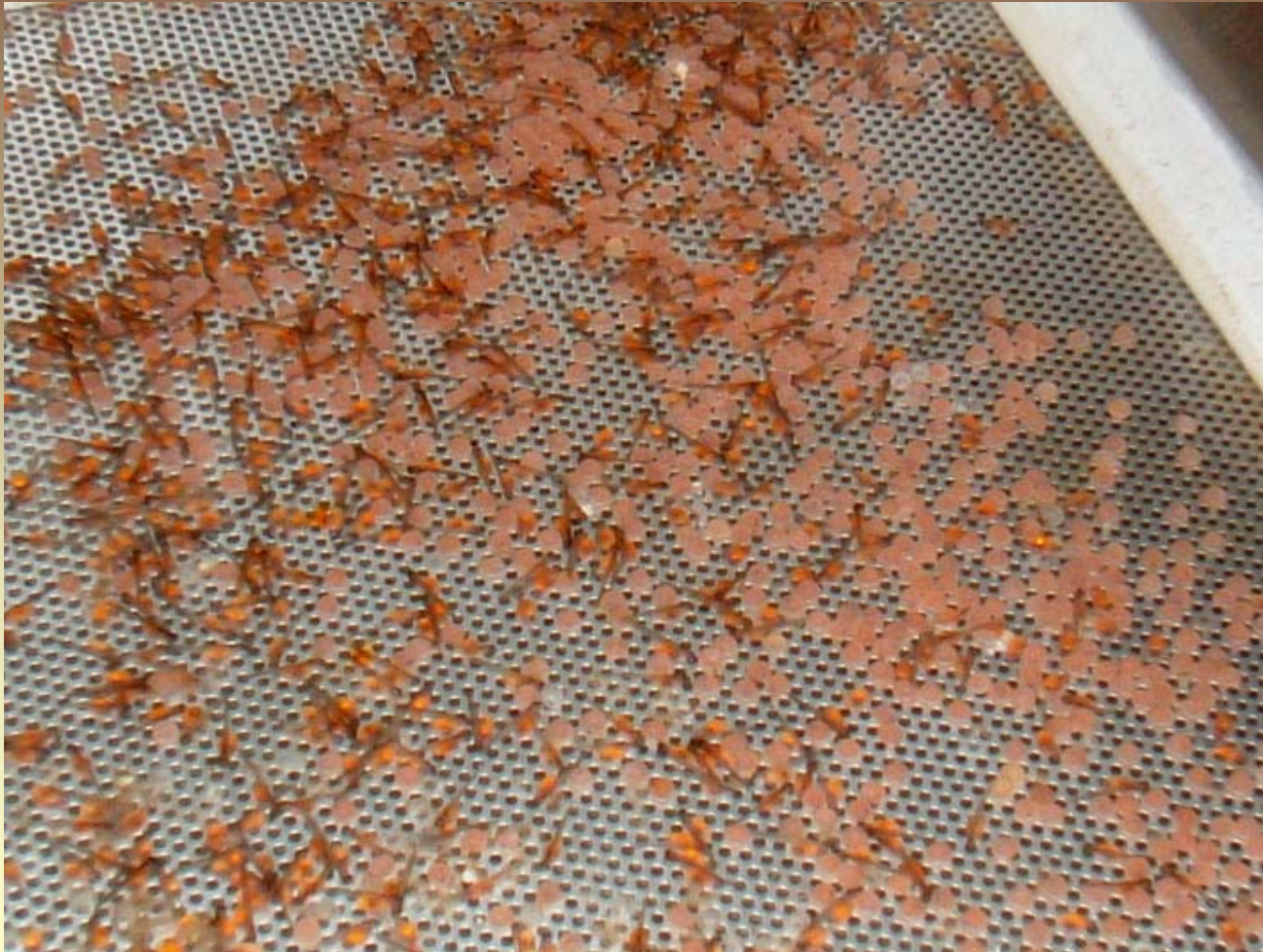
Tanks for hatching eggs and larvae at the first stage are contiguous to those hosting more developed larvae.

At the end of the series there are tanks for fry.

**Eggs and larvae**



*S. trutta marmoratus*: eyed eggs and larvae



*S. trutta marmoratus*: fry





*S. trutta marmoratus*: juvenile



*S. trutta*  
*marmoratus*:  
fully developed  
individual.

